



We work to connect people with nature  
by creating a national network of old-growth forests  
that will never be logged.

One of our primary goals is to dedicate at least one  
"representative" protected forest into this national network  
from each U.S. county where native forests occur.

---

## INFORMATION ON DEDICATING FORESTS INTO OUR NETWORK

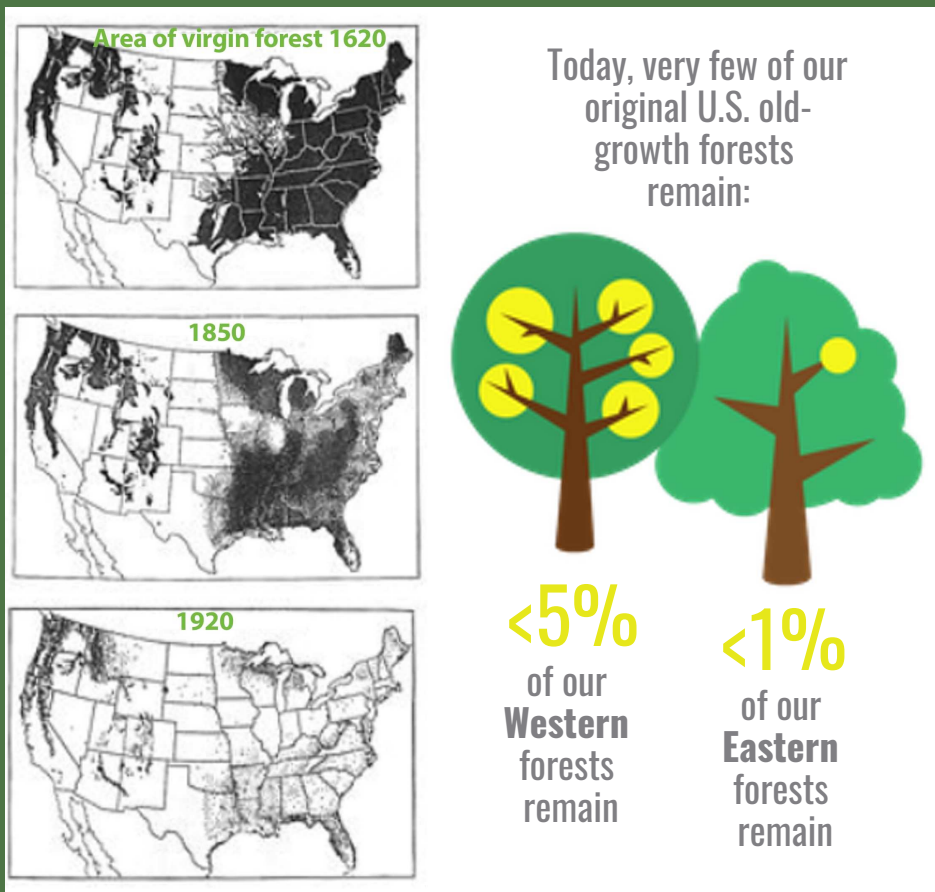
This outline highlights:

- Why a national network of protected old-growth native forests is essential for the U.S.
- The criteria OGFN uses to select forests for dedicating into the Network, and a bit about how we work
- How this recognition benefits the forests that you or your group oversees (with no obligations/cost on your part other than a commitment to preserve your forest into perpetuity)

# AMERICA'S NEXT IDEA

The U.S. established the first public park in history for the "benefit and enjoyment of the people."

Now is the time to implement the next great U.S. idea:  
**One forest, in each county, open to the public, never logged again.**



It is up to our generation to preserve  
the few remaining old-growth forests.

# THE OLD-GROWTH FOREST NETWORK

Majestic forests that supported abundant biodiversity were this nation's inheritance. The vast majority of those forests have now been removed or radically altered. It is time now to set aside a few forests and allow them to recover their old-growth characteristics. These "future old-growth forests" will be our generation's gift to the generations coming after us. If we are able to reverse the decline in mature, native forests we will be the first generation to have done so.

---

## AN OLD-GROWTH FOREST IN EACH COUNTY

Of the 3,140 counties in the U.S. most, but not all, can support forest growth. The Old-Growth Forest Network targets 75% of U.S. counties - where forests naturally grow.



Check out some of the forests dedicated into the Network



# IDEAL "REPRESENTATIVE" FORESTS IN EACH COUNTY MEET THESE CRITERIA:



OPEN TO THE PUBLIC

PROTECTED FROM  
COMMERCIAL LOGGING



AS MATURE AS POSSIBLE (IDEALLY OLD-GROWTH);  
YOUNGER NATIVE FORESTS ARE ALSO CONSIDERED



REASONABLY ACCESSIBLE  
(PARKING & WALKING TRAIL)

---

## WHAT TYPE OF "PROTECTION" IS REQUIRED FOR A FOREST TO BE DEDICATED INTO THE NATIONAL NETWORK?



FORESTS PROTECTED INTO PERPETUITY VIA  
LEGAL OR OTHER FORMAL PROTECTION

FORESTS IN THE NETWORK ENCOMPASS A VARIETY  
OF OWNERSHIP CATEGORIES (e.g., federal, state, local,  
county, city, university, camp, non-profit, land trust, and  
other types of ownership entities)



PUBLIC EXAMPLES: Natl. parks & wilderness  
areas, state wildlands, some state & city parks  
PRIVATE EXAMPLES: Trust lands with clear  
management plans prohibiting commercial timber  
harvest, lands with "forever wild" easements, etc.

TREE REMOVAL IS ACCEPTABLE WITHIN THE  
NETWORK FOR PURPOSES OF: visitor safety, trail  
maintenance, removal of non-native invasives



Please note that OGFN does not seek to guide any of your management techniques or decisions.  
We are happy to discuss any questions you may have.

# RECOGNITION INTO THE NETWORK BENEFITS YOUR FOREST



We typically like to have a small dedication for each of our newly recognized forests at which time we present a plaque (an outdoor sign to be placed as you see fit) to your forest representative. Reporting to the press, or inviting others, is optional.

We'd like to share some of the ways that recognition into the Old-Growth Forest Network may benefit you and your forest.



## AWARENESS

Your forest will be listed on our website as being dedicated into the only national Network of old-growth forests (and future old-growth forests). Your forest will be highlighted for its ecological and aesthetic values to your community and county.



## ACCLAIM

We applaud the dedicated individuals and community that have helped to preserve your forest. An OGFN forest dedication ceremony provides a chance to further recognize & acclaim your efforts.



## ALLIANCE

Become part of a growing alliance dedicated to the preservation of unique and beautiful native forests across the U.S.



## SUPPORT

We hope that with this recognition, you'll experience enhanced support for the continued protection of your forest, and for the funding of your organization.

---

WANT TO DISCUSS DETAILS WITH US?  
Sarah Horsley, our Network Manager, will be happy to  
speak with you. Reach her by email or phone at:  
sarahh@oldgrowthforest.net  
770-380-4111

## WANT TO FIND OTHER FORESTS IN THE OLD-GROWTH FOREST NETWORK?

VISIT  
<https://www.oldgrowthforest.net/network-forests>

